

Pilot Information Folder

ICAO: LOAG

applicable from 16.08.2024, 06:00Z until 17.08.2024, 18:00Z

For *IGO ETRICH CLUB* Arrivals

Issued by Union Sportflieger Club Krems





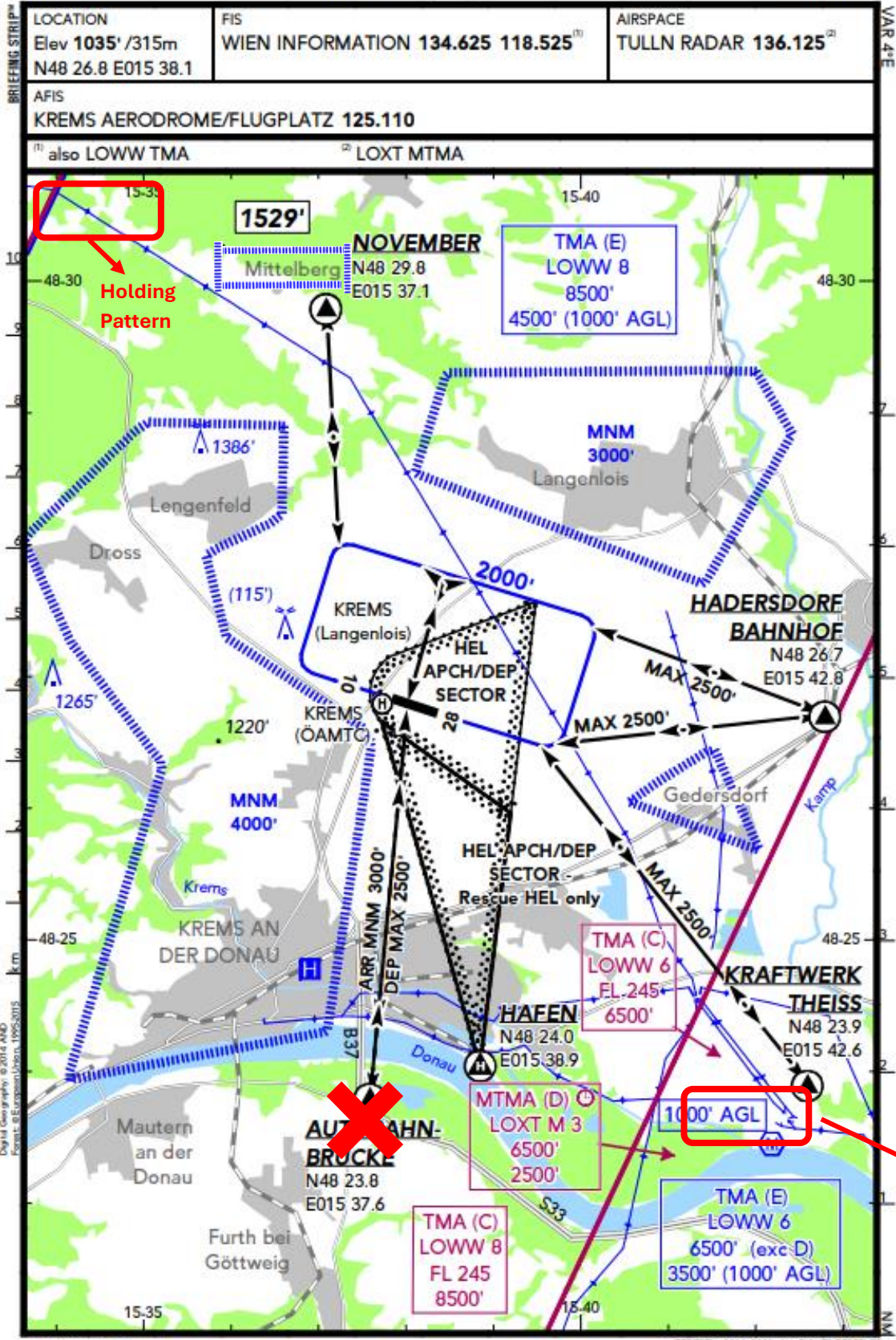
LOAG

LANGENLOIS

12 NOV 21 **19-1**

KREMS

AUSTRIA



Digital Geography © 2014 AND
Jeppesen © European Union, 1995-2015

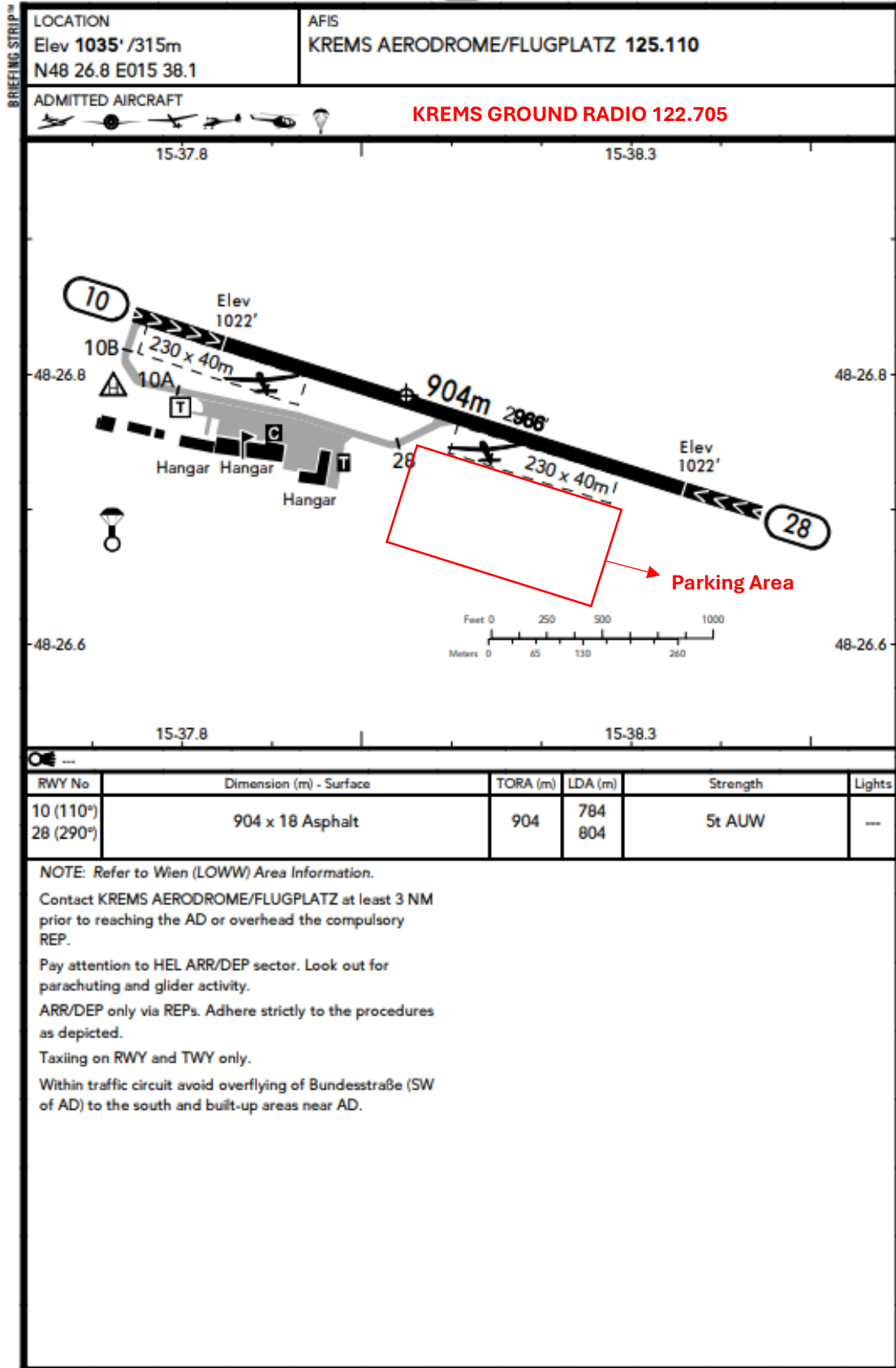
© JEPPesen, 2016, 2021. ALL RIGHTS RESERVED



LOAG
LANGENLOIS

12 NOV 21 **19-2**

KREMS
AUSTRIA



CHANGES: RWY Destination - Holders Position

© JEPPESEN, 2016, 2021. ALL RIGHTS RESERVED

Pilot Information for arriving Traffic from 16.08.2024, 06:00Z until 17.08.2024, 18:00Z

All arriving traffic shall contact KREMS RADIO 125.110 MHz 5NM prior to reaching one of the shown/stated reporting points (NOVEMBER, HADERSDORF, THEISS).

Reporting Point HIGHWAY BRIDGE not available due to Parachute Activity and Glider Activity.

KREMS RADIO will coordinate the arriving aircraft according to the current traffic situation. Holding patterns in the vicinity of NOVEMBER or THEISS may be advised if traffic load is exceeded.

All NOTAM's must be observed prior to arrival into LOAG.

Strict adherence to traffic pattern is mandatory. Avoid overflying LENGENFELD, MITTELBERG, LANGENLOIS, DROSS, KREMS, GEDERSDORF (as specified in VFR APPROACH CHART).

Be advised, Parachute Activity and Glider Activity within traffic circuit and vicinity of aerodrome in progress during the specified time period. Look out for traffic and maintain own separation at all times.

After Landing expedite vacating active Runway. Monitor KREMS GROUND RADIO 122.705 MHz when advised by KREMS RADIO (125.110 MHz).

Parking Coordination will be conducted by KREMS GROUND RADIO according to the specified parking areas. Stay clear of other parking/rolling aircraft and terrain at your own discretion at all times.

Signature of Pilot-in-Command

/

(DATE, PLACE, A/C REGISTRATION)

(SIGNATURE)

MUST BE HANDED OVER UPON ARRIVAL